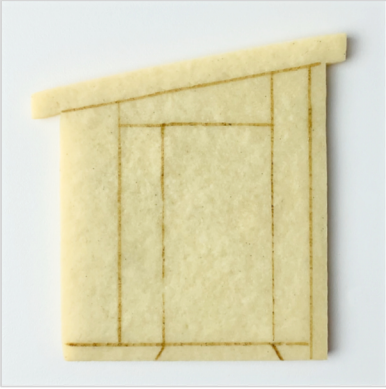
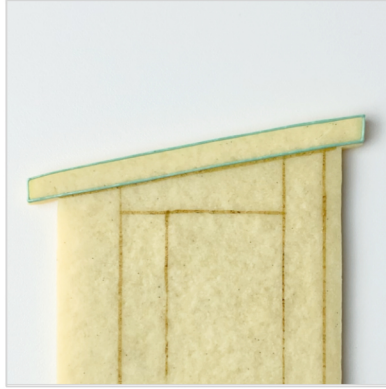


Door



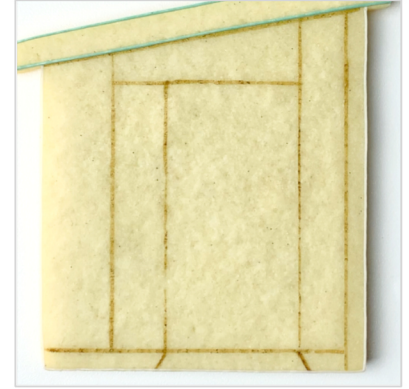
Food Marker

1. Use a food marker along with either your projector or paper templates to mark guides on your cookie.
(More details in full video)



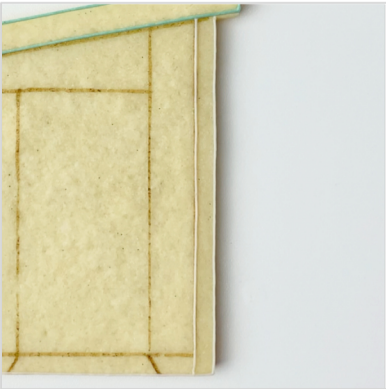
Teal PIPING

2. Outline the roof.



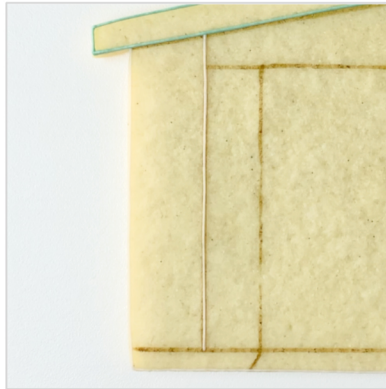
Taupe PIPING

3. Pipe around the edge of the building, including the bottom edge.



Taupe PIPING

4. Pipe a vertical line near the right edge.



Taupe PIPING

5. Pipe a vertical line inside the left edge.



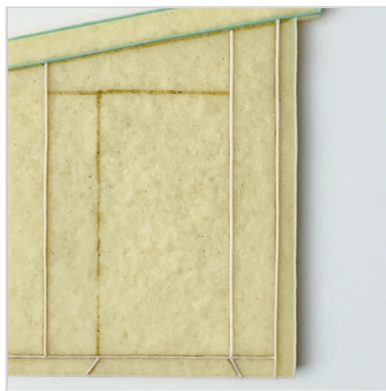
Taupe PIPING

6. Pipe a horizontal line just above the bottom edge.



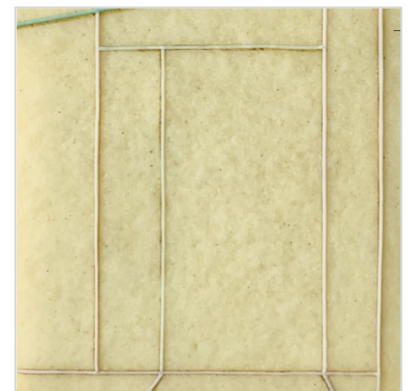
Taupe PIPING

7. Pipe two slanted lines near the bottom (below the door).



White PIPING

8. Pipe a vertical line to the right of the door.



Mint PIPING

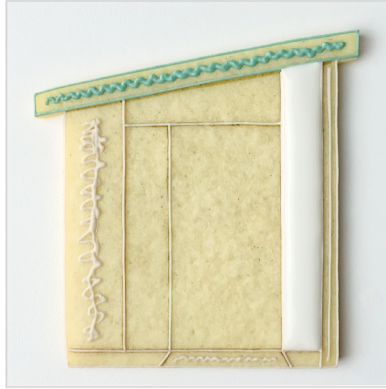
9. Pipe a horizontal line above the door and a vertical line to the left of the door.

Door (cont.)



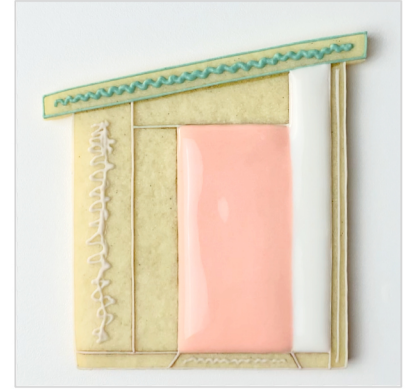
Varied Colors PIPING

10. Using colors that coordinate with each section, pipe crater-preventing squiggles in the roof, the step, and the left and right-most vertical areas.



White FLOOD

11. Fill in the white panel just to the right of the door. Work from right to left as you flood.



Pink FLOOD

12. With the white icing still wet, fill in the door. Start flooding along the right edge first.



Mint FLOOD

13. With the pink and white icings still wet, fill in the windows above and to the left of the door.



14. Allow the icing to dry or crust over.



Taupe FLOOD

15. Fill in the vertical walls on the left and right edges, as well as the step below the door.



16. Allow the icing to dry or crust over.



Teal FLOOD

17. Fill in the roof.



18. Allow the icing to dry completely.

Door (cont.)



Scribe Tool or Edible Ink Pen

19. With icing fully dried, use the template to mark key details with dots from your pen or by gently twisting your scribe into icing. (Full video makes this step clearer)



Teal PIPING

20. Pipe two parallel lines near the bottom edge of the roof.



Taupe PIPING

21. Pipe a horizontal line along the top edge of the step. (difficult to see here)



Black PIPING

22. Pipe two vertical lines and one horizontal line around the door/windows (as shown).



Black PIPING

23. Outline the shape for a small planter to the left of the door by piping a half circle and 3 straight lines for legs.



Brown PIPING

24. Outline the shape for the light sconce and immediately fill in with the same piping icing. (Tip: connect the dots from Step 19)



Brown PIPING

25. Outline the number plate to the left of the door by piping a narrow rectangle.



Pink PIPING

26. Pipe a pattern of parallel lines on the door (as shown). (Tip: connect the dots from Step 19)



Brown PIPING

27. Pipe a long door handle with a starburst shape near its center.

Door (cont.)



Black, White, Brown, Taupe PIPING

28. Pressure-pipe a series of tiny pebbles of varied colors (primarily taupe) along the lower edge on either side of the step.



Taupe PIPING

29. Pressure-pipe sets of random stone shapes on the left wall. Allow "stones" to crust before piping adjacent stones.



Black PIPING

30. Fill in the center of the planter. Pressure-pipe and wiggle the icing with your tip to settle it.



Brown FLOOD

31. Fill in the number plate with a scant amount of flood icing so that it remains fairly flat (not puffy).

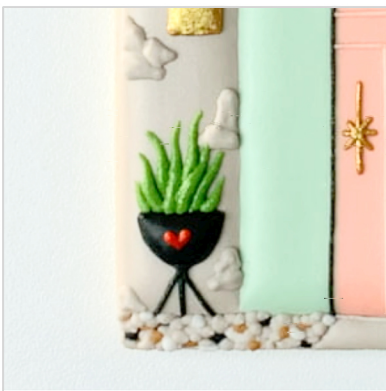


32. Allow the icing to dry completely.



Gold Paint

33. Making sure your icing is very dry, paint the light scone, number plate, and door handle.



Green (and red) PIPING

34. Pressure-pipe tall and narrow leaves inside the planter. Allow each leaf to crust before piping adjacent leaves.

Optional: pressure-pipe a small heart on the planter.



Black PIPING

35. Pipe numbers on the gold number plate.



ALL DONE!